



*Preelampsia*



# Historien om aspirin

Udvindes fra barken fra piletræet.

Hippocrates ordinerede det mod hovedpine.

SA isoleres fra barken ca. år 1700.

ASA fremstillet syntetisk af Bayer i år 1897.

1972: Wood, Lancet. Foreslår ASA ved atherosclerose.

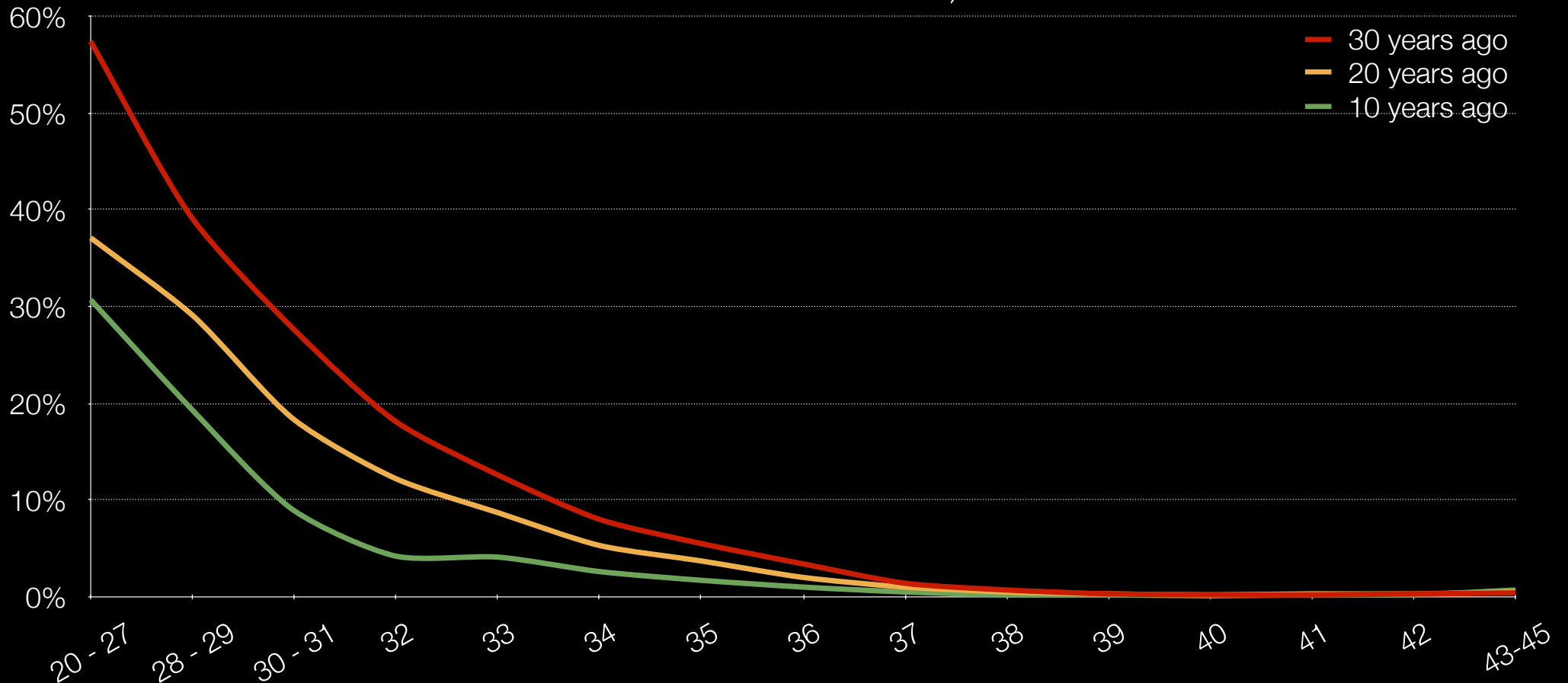
Nobelprisen 1982 i medicin for studier i prostagladiner og farmakologi.



# hvem, hvad, hvornår?

- Risici: anamnese, **sygdomme**, familie mm.
- Ved **algoritme-screening** af hele populationen accepteres en ca. **10% positiv rate** for finde de 95% (ca. 0.5% af pop., **NNT 20-30**), der vil udvikle tidlig preeclampsia.
- **Opstart tidligt!** Praktisk ved nakkefold GA 13 uger, måske tidligere; nedsat effekt senere end 16 uger.
- **150mg Aspirin**. 60-150mg er acceptabelt, helst aften.

# Perinatal death, < 28d



Gestational age in weeks

Danmarks statistik

# Spectrum



DIC, aHUS  
HELLP syndrom  
"Præ-eklampsi"  
gestational hypertension  
transitorisk hypertension  
normal fysiologi



Stakåndet

Hoste

Ødemer

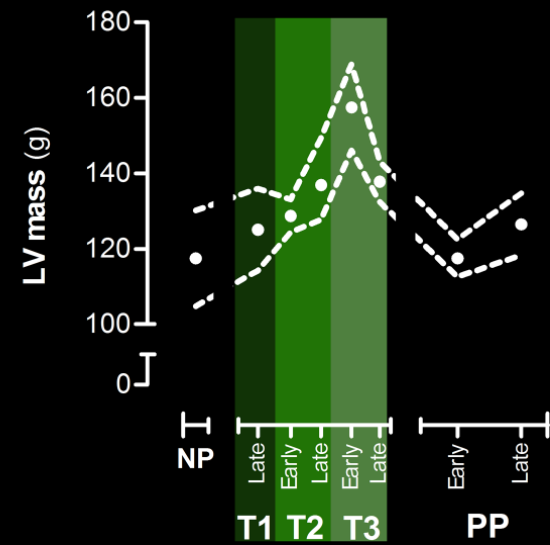
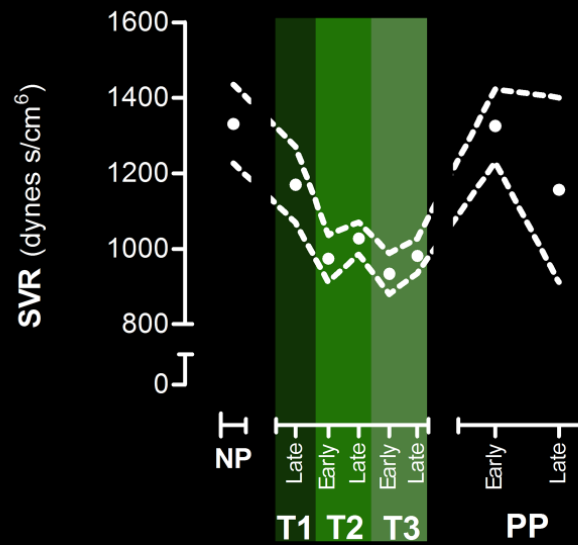
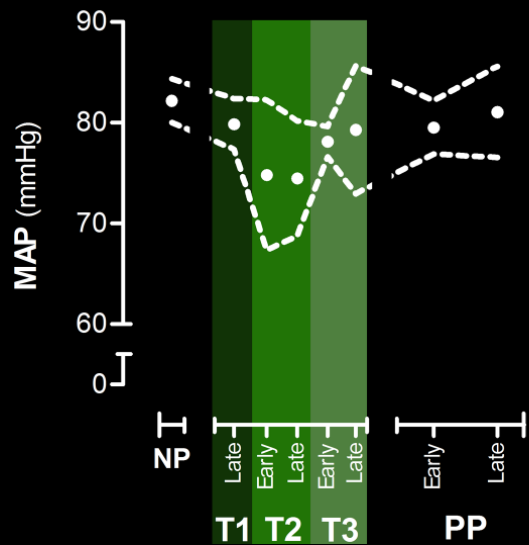
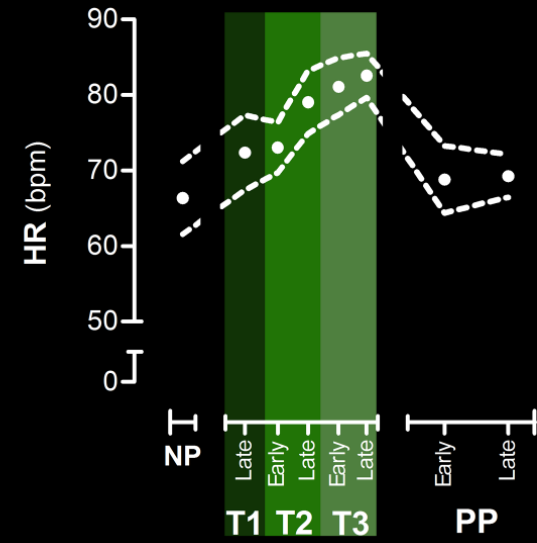
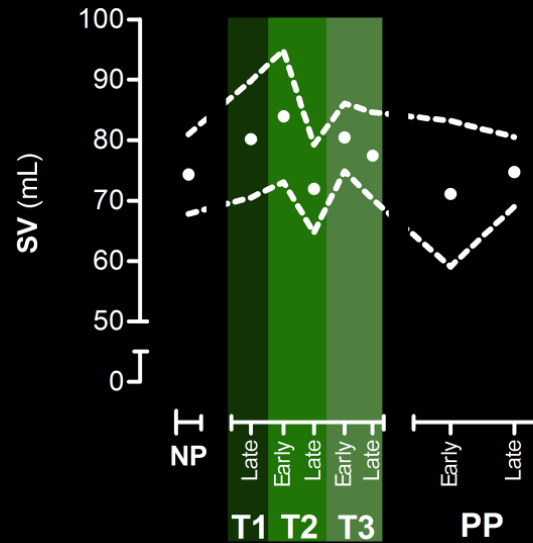
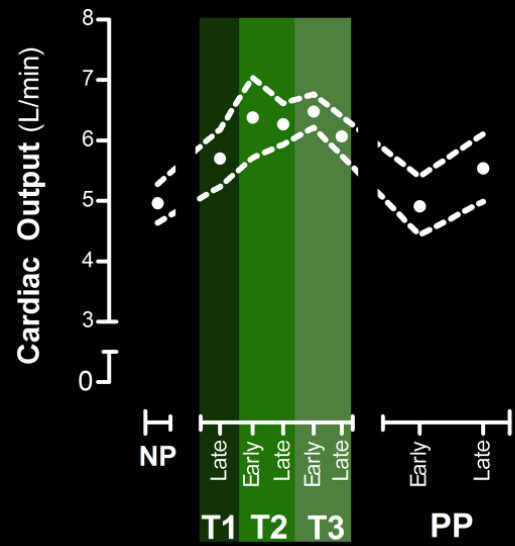
Træthed

Forvirret

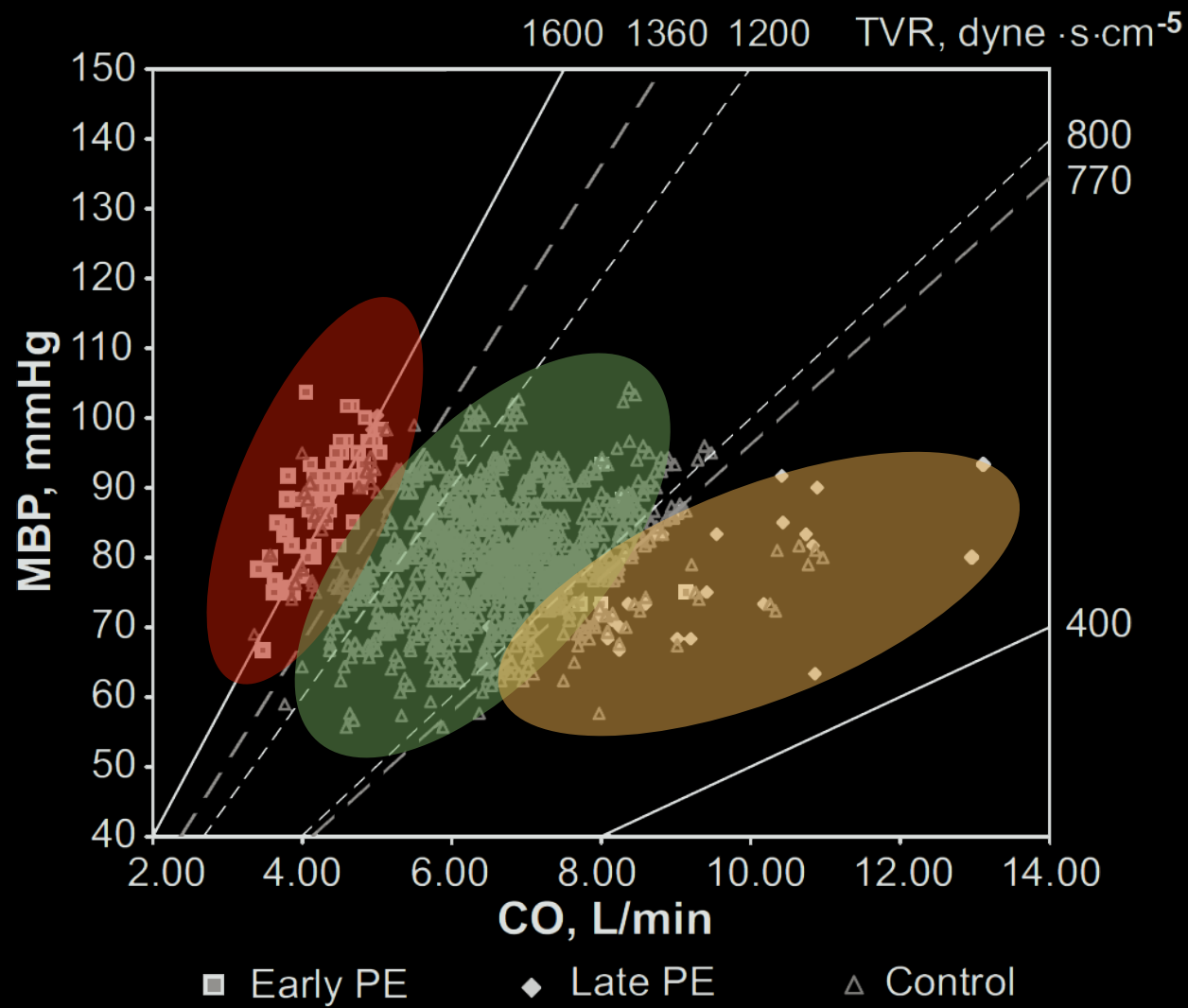
Hurtig puls



Ida Behrens, 2016

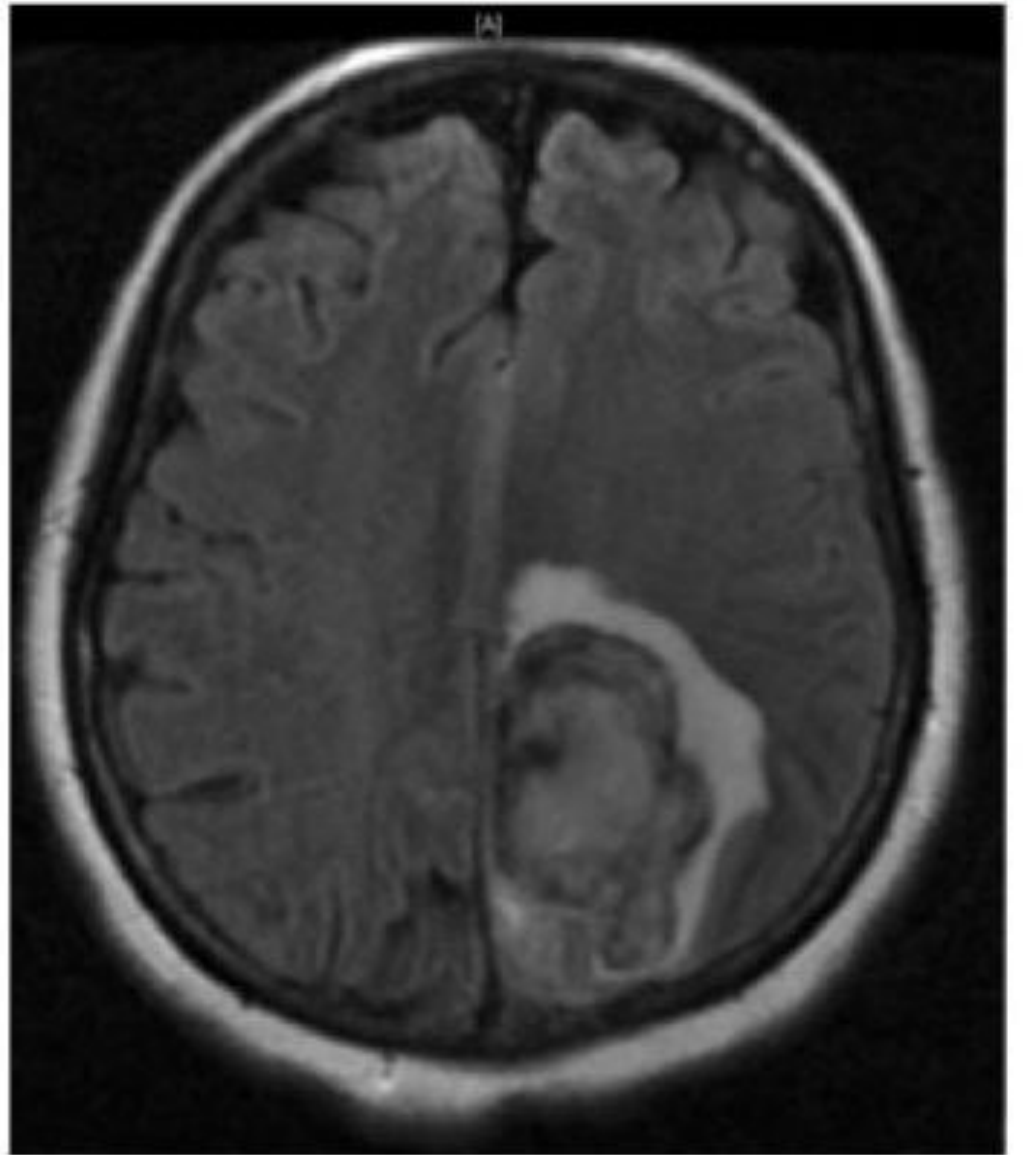






Valensise et al., Hypertension 2008





# systolic?

“Stroke”: verified by autopsy, CT and chart. n=28.

1980 - 2003, Mississippi US; referral center.

low-risk women, including 2 chr. HTN, being normotensive without medication in first part of preg.

96% sBT > 160 mmHg (159-198 mmHg)

12% dBT >110 mmHg (81-113 mmHg)

11% prescribed anti-hypertensive drugs prior to stroke.

## Prodromal and complications

Symptoms	% (n=24)
Headache	96 %
Nausea	63 %
Abdominal pain	54 %
Scotoma	38 %
Other CNS	71 %

Complications	% (n=28)
Death	54 %
Coma	54 %
Eclampsia	29 %
Pulmonary oedema	36 %
Well and neurological intact	11 %



... just keep the  
blood pressure below  
160/110mmHg...

**140/90!**

